

# Features

- A single fibre optic system protects up to 80km
- Locate intrusions to 25 metres
- Two year warranty
- No electronics or power in the field
- Immune to EMI/RFI
- Intrinsically safe

# High performance perimeter protection

## FFT Secure Fence™ Specifications

<b>Fibre Optic Sensor</b>	Custom UV stabilised single mode fiber optic sensor cable - expected life > 20 years
<b>Sensing Configuration</b>	Distributed sensor with a total optical path length of up to 80 km per controller Multiple systems can be networked to protect longer fence lines
<b>Location Accuracy</b>	Within 25 metres anywhere along the sensor cable
<b>Probability of Detection (POD)</b>	Independently tested to better than 95% due to intelligent signal processing and analysis of disturbances
<b>Nuisance Alarm Rate (NAR)</b>	Less than 3% due to multi-parameter intelligent signal analysis, discarding non-intrusion and environmental events
<b>Operating Temperature Range</b>	FFT Sensor Cables: -40°C to +70°C
<b>Controller Dimensions/Weight</b>	175mm H x 485mm W x 530mm D Weight 24 Kg 19" rack mounted, 4U high
<b>Electrical Specifications</b>	Input voltage 110-240V AC, 50-60Hz, auto ranging, max 2 x 400 watts, redundant supplies Note: All field installed components are passive and require no power, communications, or electronics on the fence line
<b>System Interface</b>	<ul style="list-style-type: none"> <li>• TCP/IP via FFT's CAMS (Central Alarm Monitoring System) software</li> <li>• Optional dry contacts</li> <li>• Optional software development kit available to interface to a range of security management systems and devices</li> </ul>
<b>Alarm Monitoring</b>	Real-time distributed monitoring - provides an intuitive map-based operator GUI, and interfaces to CCTV systems, MODBUS, email systems, external SMS systems, lighting, gates etc via TCP/IP
<b>Warranty</b>	Comprehensive two year warranty on hardware and software with ongoing warranty extension program available for the life of the product
<b>Seasonal Calibration</b>	No seasonal calibration or adjustments required
<b>Zone Length &amp; Number</b>	Infinitely variable 'Virtual Zones' are created in the FFT CAMS™ software to suit specific site requirements



# Applications

- Military bases
- Government facilities
- Oil refineries
- Petrochemical plants
- Power plants
- Country borders
- Airports



With an FFT Secure Fence™ system, you can detect and locate intrusions on perimeters and borders that were, until now, always thought to be too expensive to protect.

The low cost fibre optic sensor cable is easily attached to the fence, pinpointing the location of an intrusion to within 25 metres regardless of the fence length.

FFT's ARaD advanced signal processing eliminates nuisance alarms, without compromising the sensitivity of the system.

## Only from FFT - The ultimate force in fibre optic intrusion detection

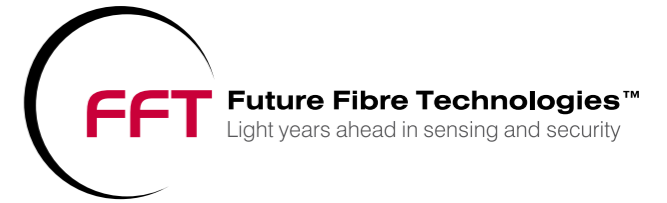
**Australian Headquarters**  
 Future Fibre Technologies Pty Ltd  
 10 Hartnett Close  
 Mulgrave VIC 3170  
 Australia  
 Phone: +61 3 9590 3100  
 Fax: +61 3 9560 8000  
 Web: www.fft.com.au  
 Email: info@fft.com.au

**Americas**  
 Future Fibre Technologies Inc.  
 800 West El Camino Real  
 Suite 180  
 Mountain View CA 94040 USA  
 Toll Free: +1 (877) 650 8900  
 Outside USA: +1 (650) 903 2222  
 Fax: +1 (435) 417 6671  
 Web: www.fft-usa.com  
 Email: info@fft-usa.com

**Europe**  
 Future Fibre Technologies Pty Ltd  
 3000 Hillswood Drive  
 Hillswood Business Park  
 Chertsey, Surrey KT16 0RS  
 England  
 Phone: +44 (0)1932 895 317  
 Fax: +44 (0)1932 895 318  
 Web: www.fft-emea.com  
 Email: info@fft-emea.com



[www.fft.com.au](http://www.fft.com.au)



FFT Secure Fence™ is the ultimate fibre optic perimeter security detection and location system, pinpointing intrusions to better than 25 metres along perimeter fences up to 80km long. Multiple systems can be networked to monitor longer distances such as country borders.

The simple installation, reliability and maintenance free operation delivers the lowest Total Cost of Ownership (TCO) of any long perimeter solution in the market.

## Key Benefits

- ▶ Know the exact location where an intrusion occurs and where to dispatch security staff to ensure a rapid response, or activate specific CCTV imagery.
- ▶ Significant up-front cost savings as only one system is required for perimeters up to 80km long. Secure Fence delivers the lowest \$ per metre.
- ▶ Lowest ongoing Total Cost of Ownership (TCO) as there is no electronics in the field, no power in the field, and it is easy and economical to install or expand. There is no field maintenance, and the fibre optic cable is unaffected by RFI, EMI, lightning or storms. Only the extremely durable and reliable fibre optic cable is out in the field.
- ▶ Security staff can have faith in the system as Secure Fence delivers >95% detection simultaneously with an extremely low Nuisance Alarm Rates due to the intelligent event discrimination and analysis utilised.



## 10 Key Reasons Why You Can Depend On FFT

**Experience** – Well over 100 major site installations around the world

**Independently Tested** – FFT systems consistently deliver what we promise, backed by independent testing

**Stability** – The world's most experienced fibre optic security sensing company, operating since 1994

**Value Proposition** – Secure Fence delivers outstanding price & performance benefits

**Technology** – FFT's R&D and product development programs ensure you always have the very latest and most powerful technology, and systems are easily updated with the latest algorithms

**Quality** – Certified ISO 9001:2000

**The Right Products** – Designed and developed by FFT specifically for Military & Industrial applications

**No Risk** – All FFT systems come with a two year hardware and software warranty

**Support** – FFT has global support capability

**Availability** – FFT has partners located around the world

FFT Secure Fence™ is the ultimate fibre optic perimeter security detection and location system

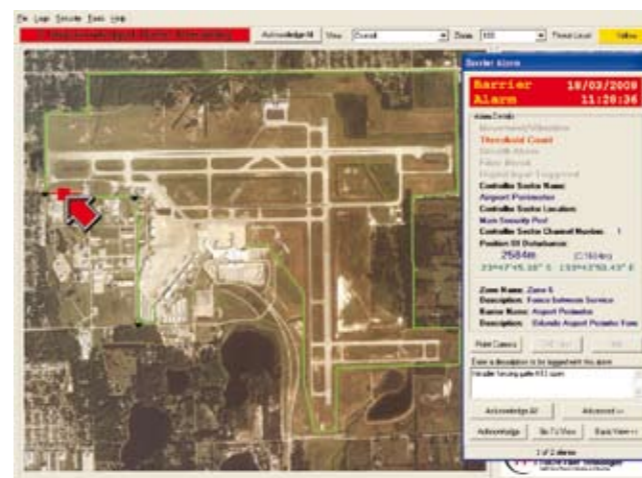
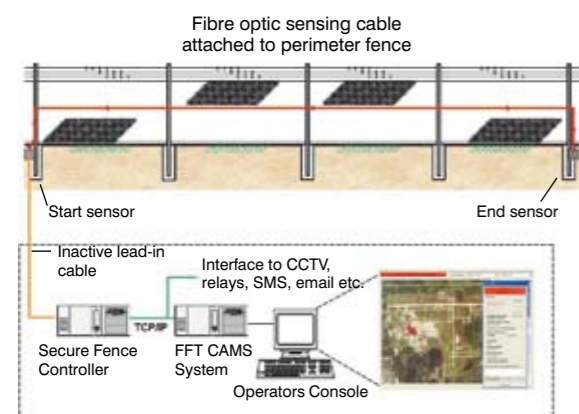
## How It Works

Simple to install and operate, the FFT Secure Fence™ system delivers truly outstanding levels of detection and location combined with one of the lowest Nuisance Alarm Rates available. It is maintenance free; operating easily and reliably under a wide range of operational and environmental conditions – day after day, year after year.

At the heart of the system is the intelligence built into the Sensing Controller. A laser beam is transmitted along the fibre optic cable attached to the fence, and the returned signal is automatically monitored and analysed for disturbances. This returned signal is also digitally processed to identify and eliminate environmental nuisance alarms.

Simple and intuitive to use, Secure Fence™ delivers the precise information your security staff need, combined with the ability to interface and activate CCTV systems, lighting, gates, email, plus a broad range of external devices and systems.

The area or zone where alarms are triggered along with the GPS co-ordinates is instantly displayed onto a sitemap, and the event is automatically logged into a secure database. A signal can then be



sent via Ethernet directly to a high level command and control system, CCTV camera system, email, or other external monitoring.

**The operator interface is available in a range of languages including English, Arabic, French, Russian, Spanish and Chinese.**

## About FFT

With well over 100 major installations in some of the most hostile environments on the planet, FFT has the proven real-world experience to deliver highly reliable yet cost-effective intrusion detection and location solutions.

Future Fibre Technologies' business is totally focused on the security industry, and FFT is a world leader in the design and development of fibre optic sensing technologies for security applications.

FFT holds international patents for these unique technologies that have been developed over many years. Since 1994, FFT has successfully positioned itself to be the technology of choice for large perimeter fence applications, network protection, and buried pipeline monitoring for TPI.