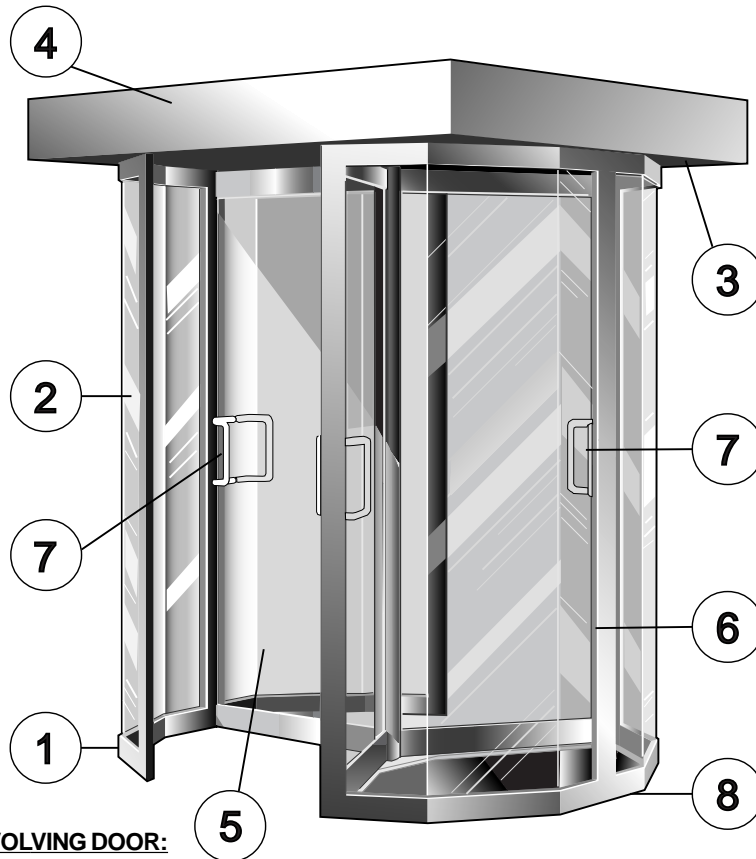


# MODEL TRS 355 MANUAL SECURITY REVOLVING DOOR



## MODEL TRS355 MANUAL SECURITY REVOLVING DOOR:

The model TRS355 Manual Security Revolver Is an architecturally designed security entrance for use where high levels of pedestrian access control are required. A maximum use of glass is utilized to ensure optimum vision for both the users and the security surveillance systems. In addition, the glass and the 120° 3-wing design results in large comfortable compartments, which provide a spacious feel to the user. An advanced Programmable Logic Controller (PLC) operates with any of the proprietary access control devices, such as: card readers, biometrics, etc. Standard emergency egress mode for power loss or fire alarm is Fail-safe.

### DESCRIPTION:

1. Fabricated from aluminum extruded framing profiles (.125") thickness with glazing jamb and clips.
2. Door wings and drum wall panels are constructed with 10mm (2/5") clear tempered safety glass; assembled with a silicone seal.
3. Weatherproofed canopy and roof sections are fabricated from steel sheet stock. Interior ceiling is equipped with a locked security access panel, (located on the secure side), for ease of maintenance.

4. Electro-mechanical assembly including:
  - Solenoid(s) with locking cams and limit switches.
  - Rotor positioning lever with recall springs and hydraulic dampers to ensure progressive and smooth movements.
  - Electrical control panel with anti-intrusion security.
  - Programmable Logic Controller (PLC), complete with relays, transformer 110/24V, fuses and general connection blocks.
5. Rotating door wings are configured in a 120° 3-wing design. Fabricated with (.125) aluminum extrusions and 10mm (2/5") clear safety glass. A "Rigid Cross" design utilizes all (3) door wings fixed onto a rotating central tubular shaft. The bottom utilizes a maintenance-free sealed ball bearing; while the top is connected to the electro- mechanical system.
6. The 120° "restricted access area" of the turnstile is constantly monitored by a floor-mounted contact mat, or Overhead Sensor System, which detects any unauthorized access or tailgating attempts. Overhead blocking, tracking, and safety sensors, optional.
7. Six (6) Door handles required. Standard is a "U" shaped tubular handle, polycarbonate, white finish.
8. A recessed floor template, including a contact mat frame, is supplied during floor preparation to ensure a proper installation. Surface applied installation, optional. (See illustration below.)

*Specifications subject to change without prior notice*

MODEL TRS355  
MANUAL SECURITY REVOLVING DOOR

TECHNICAL DATA  
# ACS-1014-EN

UL FILE #E210350  
USA  
MANUFACTURING FACILITY  
CERTIFIED NBN EN ISO 9001

**A** automatic  
systems

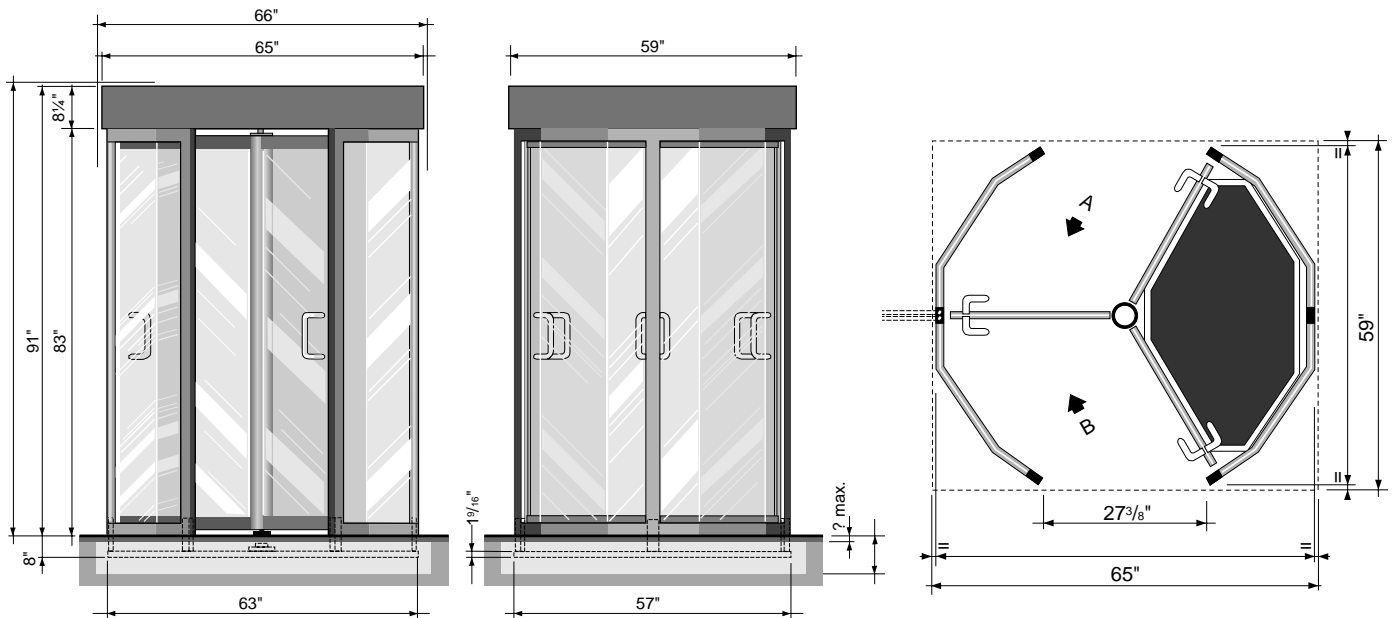
### **FINISH AND ANTI-CORROSION TREATMENT:**

- Anti-rust treatment completed by one coat of rust proofing primer, (2) component micaceous iron epoxy, 40 µm thick.
- One coat of (2) component polyurethane finish paint, 40 µm thick.
- Standard color: RAL 7001 grey color. (Other colours available as options)
- The metal structure and the fixed arm of the turnstile are protected against corrosion by zinc metallization, 250 grs/m2 hot zinc spraying, after sandblasting.

### **TECHNICAL CHARACTERISTICS:**

- Electrical power supply: 115V single-phase.
- Frequency: 60Hz.
- Control circuit: 24 V DC.
- Hydraulic damper : Adjustable type.
- Power consumption: 100W.
- Operating temperature: -25°C to +70°C (-10°F to 150°F)
- Net weight:
  - Structure: 1000 lbs.
  - Recessed template: 100 lbs.
- Solenoid: 24 V DC 100% type
- Humidity: 95%.
- Glazing: Clear safety glass 10mm (0.394") thick
- Overall dimensions: see below.

### **OVERALL DIMENSIONS:**



### **OPTIONS:**

- Remote control for passage in either one or two directions using push button(s), card reader(s), biometrics, coin or token devices, etc.
- Operation by 1/6 th of a turn (60° rotations), with intermediate blocking for dual control devices.

#### **Example:**

1st 60° rotation 1/6th of a turn = card reader

2nd 60° rotation 1/6th of a turn = biometrics or personal code input.

- Finish Paint Color: (RAL number to be supplied with order).
- Counting devices.
- Overhead sensor system.
- Weather stripping.
- Additional heater.

### **INSTALLATION PATTERN:**

#### **OPERATION**

Model TRS355 is Bi-directional, which is two-way traffic, one direction at a time. (See operational modes).

#### **OPERATIONAL MODES**

Various modes of operation are available for passage in either direction, entering and exiting. They are as follows:

1. Free access
2. Controlled access
3. Locked

**MODEL TRS355**  
MANUAL SECURITY REVOLVING DOOR

**TECHNICAL DATA**  
# ACS-1014-EN

**UL FILE #E210350**  
USA

**MANUFACTURING FACILITY**  
CERTIFIED NBN EN ISO 9001

**automatic**  
systems